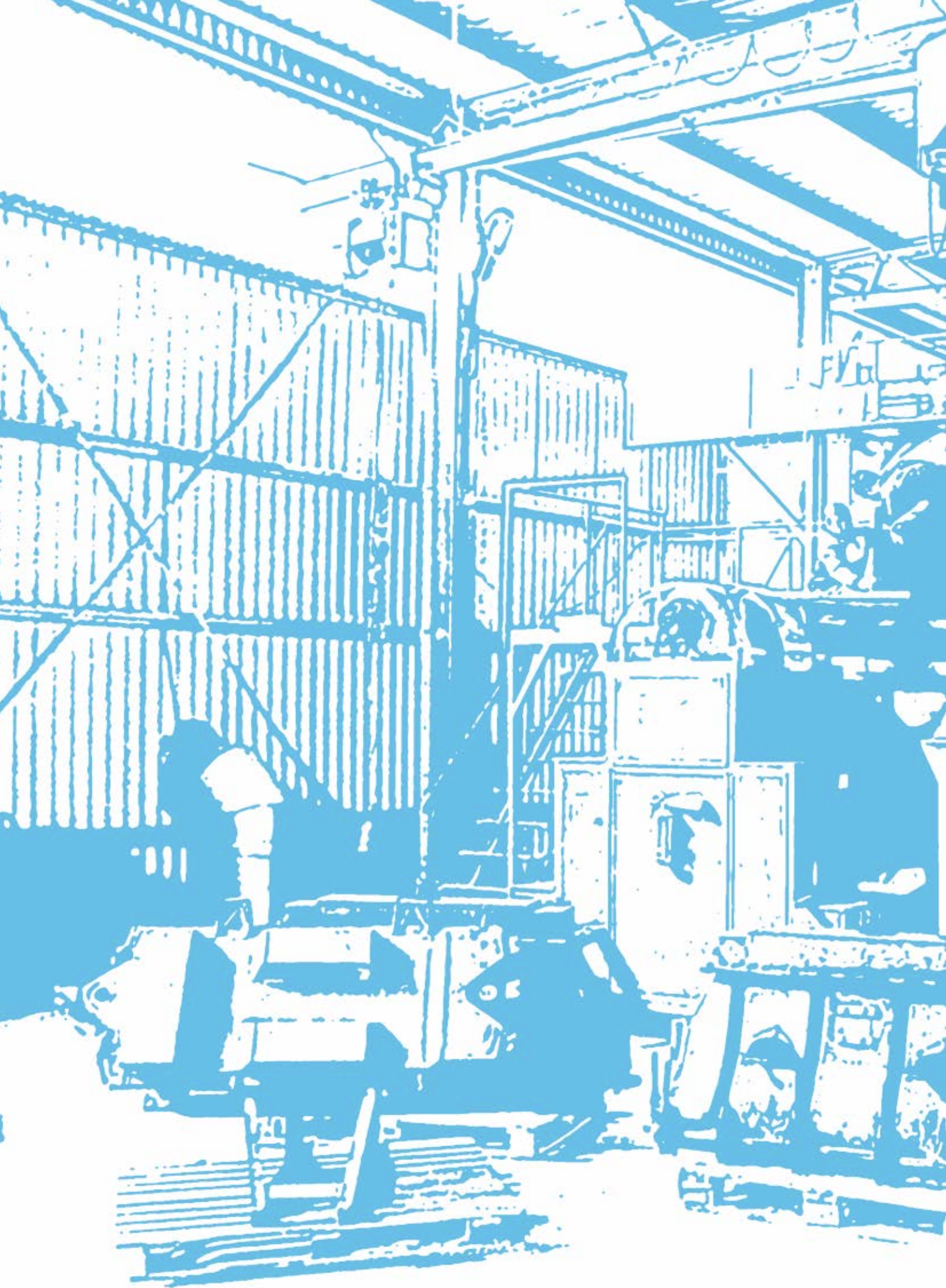


# PRODUCT CATALOG







# TABLE OF CONTENTS

---

About us.....	4
The technology of rotational molding.....	5
Design department.....	6
<b>PRODUCTION</b>	
Water filled road barriers.....	7
Construction rubble discharger chutes.....	8
Wells.....	9
Agro tanks for sprayers.....	10
Tanks.....	12
Septic tanks.....	17
Mobile toilet cabin.....	18
Peat dry closet for country house.....	19
Summer shower.....	20
Floats for slurry pipeline.....	21
Elements of children’s playground.....	22

# ABOUT US

---

«Chimbudplastmass» Ltd.

Ukrhimplast®

In 2005, a group of companies united by a trademark Ukrhimplast®, began production of plastic products by rotational molding technology.

Mission: To enable customers to realize their own ideas, getting as soon as the product functionality, ergonomics, and quality.

Purpose: To combine the advantages of mass and individual production, show the possibilities of technology and engineering capabilities of the enterprise.

Our goal – to provide consumers with quality, reliable, and inexpensive products for various industrial and domestic purposes. We accept orders for the manufacturing of standard products as well as the development and manufacture of new products for different purposes. Presence of Design Department and Mold Production Department enables to reduce development time and the introduction of a new product to one month.

There is a special pricing policy for our customers that allows us to respond maximum flexibility to customer requirements and in a timely manner to ensure its needs.

We are constantly forming a regional network of dealers for selling our products. Regional dealers will have favorable conditions. Well-established business relationships provide stability, reliability and speed of order execution, the ability to arrange delivery.

Not stopping there, we regularly conduct an effective marketing policy for the development of new products, the exit as the regional and the international markets, such as Russia, Belarus, Lithuania, Moldova, Kazakhstan, Azerbaijan, Georgia, Lithuania, Latvia, Poland and Hungary.

*We hope that You are interested in products of our company and in Your person face we will acquire a new and reliable business partner.*

# THE TECHNOLOGY OF ROTATIONAL MOLDING

---

Less than 100 years have passed since the discovery of the basic principles of industrial processing and manufacturing of plastic. This discovery made almost «world revolution» in the production of polymers. One of the biggest achievements we can assume that, thanks to its unique properties, different types of polymers have successfully replaced many traditional building materials – metal and concrete, glass and wood. The method of polymer processing, in which we operate – the method of rotational molding.

Rotational molding – the technology of production of light and seamless polymer products of large size, capable of competitive prices and consumer properties. Among the materials for rotational molding polyethylene (PE) plays an important role. The method of rotational molding is possible to obtain products with very complex shapes with the equal walls' thickness, which is achieved by adjusting the ratio of the speeds of rotation forms the axes. Products produced with the help of rotational molding are widely used in almost all fields of the market.

## The rotomolding process.

The mould is attached to one of the handles (the so-called «arm») of the rotomolding machine. The certain amount of polymeric material is loading into it. After that the mould is closed tightly and moved into the heating chamber. There it turns into two mutually planes at

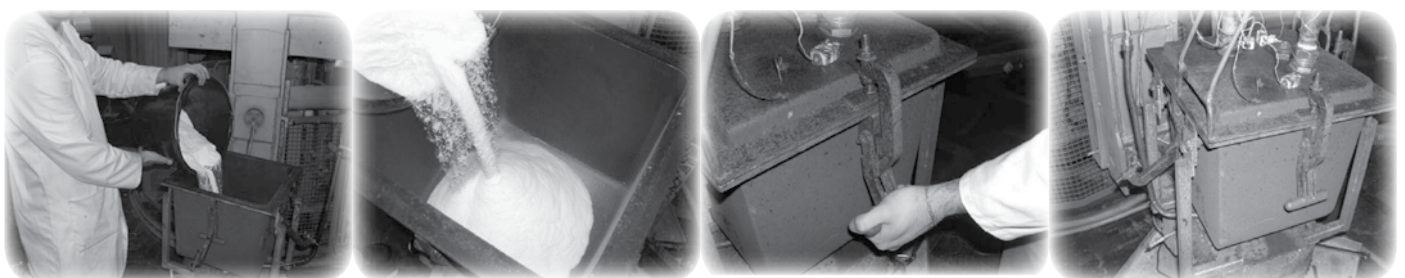
a rate of 4 to 20 rev / min. Under the influence of temperature in the oven polyethylene melts and covers the inner surface of the mold evenly.

The mould moves to the cooling sector. It continues to rotate, thereby achieving the equal walls' thickness.

The product is extracted from the mould and the process repeats.

## Why rotation molding?

- The comparative simplicity of the process
- Relatively low-cost price for moulds
- The ability of quick producing and repairing of the moulds
- The possibility of producing large-sized products
- Getting products with no internal stresses
- The possibility to produce solid products of complex shape
- The possibility to put inside the metal parts and graphics
- The possibility of producing the same product with different wall thickness without having to modify the mould
- The possibility of simultaneous production of different products
- The possibility of making any number of products in the presence of the appropriate forms. .



# DESIGN DEPARTMENT

---

Design Department of Ukrhimplast Ltd. provides next services:

- ✓ Product development, starting just with Your ideas.
- ✓ Organization of manufacture of the product according to Your drawing.
- ✓ The organization of production of plastic products by the metal or any other model.
- ✓ Design and manufacture of moulds for roto-molding process.

Engineers of Design Department in accordance with the customer's wishes develop drawings and a computer model of the product. After approval from the customer drawings are transferred to our factory mould production workshop. Metal mould is produced, on which the production output is produced.

After producing a test batch of products (few units), the mould is adjusted in accordance with the wishes of the customer.

### The benefits of developing products with us:

- ✓ Fastness (in a 2-4 weeks it is possible to run in production).
- ✓ Prices for moulds for the manufacturing of products using our technology (rotomolding) are much lower for mould by any other technology (thermo-plast machine or vacuum forming). Therefore, the production is cost-effective even for a relatively small batches.
- ✓ An upgrade (alteration) of existing forms is possible



*We invite machinery manufacturers to replace some metal parts for plastic, which often provides a strong gain by many parameters. It is advantageous to replace the majority tanks, containers, and any other wear parts to their plastic analogues.*

# WATER FILLED ROAD BARRIERS

UKRHIMPLAST

www.ukrhimplast.com

+380 (44) 492-82-06



BARRIER L=1500

- ✓ Rigid connection between barriers. Additional resistance to column rupture..

**Application:**

Fencing for repair highways and organizing sports events.

BARRIER L=1200

- ✓ Easy to use universal barrier. It can be used separately or in the column.

**Application:**

Fencing during repairing works of communications in the towns.

BARRIER L=1000

- ✓ Fit into each other, easy to store and transport.
- ✓ Possible to create closed circuit with the connecting beams.

**Application:**

Fencing during repairing works of communications in the towns



Model	dimensions (L * W * H)	weight (kg)
barrier L=1500	1500x800x480	15
barrier L=1200	1200x800x480	10
barrier L=1000	1000x800x480	8
connecting beam of L=1000 barrier		2





www.ukrhimplast.com

+380 (44) 492-82-06

# CONSTRUCTION RUBBLE DISCHARGER CHUTES



**ACCEPTING CHUTE**



**ACCEPTING FLOOR CHUTE**



**STRAIGHT CHUTE**

Construction Rubble Discharger Chutes applied with great success on the construction in Europe and Ukraine.

Construction Rubble Discharger Chutes designed to remove rubble from the floors being built or repaired buildings. It consists of straight chute, accepting chute and accepting floor chute.

To reduce the velocity of garbage every 15 m metallic corbel of fastening is set. Chutes are connected with steel chains and carabines. With extinguisher, construction rubble discharger chute is attached to the scaffolding, window openings or balcony railing of the building.



**CORBEL OF FASTENING**

Type	Dimensions, mm			Weight, kg
	H	Ø bottom	Ø top	
Accepting chute	1100	365	535	11
Accepting floor chute	750	365	535	11
Straight chute	1100	365	450	12
Corbel of fastening	1100			42
Extinguisher	1750			47



**EXTINGUISHER**



## COMMUNICATION WELLS

Plastic wells are used in the construction of the main, local telecommunications and electricity networks, is designed to accommodate the couplings and the packing of the stock of fiber-optic and power cable. Installed as a pedestrian, and in the transport zone.

## SEWERAGE WELLS

Polyethylene wells are used in the construction of sewerage and water supply systems. For connecting pipes necessary branch pipes are welded.

Model	Dimensions, mm
 Well PE KL-660	Ø 770 (660) mm, H = 500 mm
 Well PE KL-660 for coupling	L = 1215 mm; B = 770 (660) mm; H = 500 mm
 Well PE KL-1200	Ø 1200/660 mm; H = 600 mm
 Ring PE KKL-660	Ø 790 (660) mm, H = 350 (300) mm
 Hatch - 660	Ø 710 (660) mm, H = 115 mm

Model	Dimensions, mm
 Ring PE KKL-660	Ø 790 (660) mm, H = 350 (300) mm
 Well PE KL-660	Ø 770 (660) mm, H = 500 mm
 Well PE KnL-Kr-660 draining Cross-bin well	Ø 790; H = 500 mm in 3*110, out 160
 Neck PE KKL-1000	Ø 1160/660 mm,
 Ring PE KKL-1000	Ø 1160 mm, H = 580 (500) mm
 Well PE KL-1000	Ø 1140 mm, H = 740 mm
 Well PE KnЛКр-1000 draining Cross-bin well	Ø 1200; H = 1000 in., out. * 400/800

### Advantages of plastic wells compared to concrete and reinforced concrete wells:

- ✓ rigidity;
- ✓ sealing compounds;
- ✓ does not require additional painting;
- ✓ resistance to temperature extremes, frost;
- ✓ strength and tightness in the places of pipes enter, cables;
- ✓ the design provides a reliable, easy to install;
- ✓ the possibility of cutting and welding of the well;
- ✓ the basic model can be adapted for the of individual projects of engineering systems;



www.ukrhimplast.com

+380 (44) 492-82-06

# AGRO TANKS FOR SPRAYERS

## TANKS FOR TRAILED AGRICULTURAL SPRAYERS



Agro-Series tanks are produced since 2007. They are designed according to suggestions of producers of agricultural machinery. These products were repeatedly improved to reflect operating experience

## TANKS FOR MOUNTED AGRICULTURAL SPRAYERS



and are being brought to a high degree of reliability. Agro-series tanks passed bench tests in Ukrainian Agricultural Technologies Research Institute.



**AGRO-2000**



**AGRO-600/800**



**AGRO 200/300/400**

Model	volume (l.)	dimensions (L * W * H)
AGRO-2000	2000	2370*1140*1280 1220*1140*2370
AGRO-2500*	2500	2426*1152*1400
AGRO-3000*	3000	2426*1152*1600

\* Versions with inner breakwaters are available

Model	volume (l.)	dimensions (L * W * H)
AGRO-200	200	1070*410*610
AGRO-300	300	1080*460*725
AGRO-400	400	1180*460*910
AGRO-600	600	1140*750*1175
AGRO-800	800	1360*750*1215

Due to low center of gravity agro tanks are resistant to rollover. When washing agro tanks there is complete draining of the liquid solution without any additional effort.

# TANKS FOR PLANTERS, ELEMENTS OF REAPING MACHINES



www.ukrhimplast.com

+380 (44) 492-82-06

Working closely with manufacturers of agricultural machinery, Ukrhimplast® annually introduces and launches new kinds of plastic products.

We produce several types of bins for planters, as well as various tanks for agricultural machinery:

## BINS FOR MINERAL FERTILIZERS



## GRAIN BINS



## TUK BINS



## TANKS FOR SEED DRESSING



## ELEMENTS OF REAPING MACHINES

In 2012, the company started to develop and manufacture a set of plastic components for the reaping machines .



Our company developed special program which lets manufacturers of agricultural machinery in the shortest possible time and with minimum costs, to move from the existing metal elements to their plastic analogues in the shortest possible time and with minimum costs.



[www.ukrhimplast.com](http://www.ukrhimplast.com)

+380 (44) 492-82-06

«UKRHIMPLAST» Ltd. offers a wide range of tanks and containers for foods, water, fuels and chemicals of from 50 to 15000 liters.

These tanks are made by rotational molding from high-strength, anti-frost, food polyethylene. Given that the molding of products takes place without any pressure, all products receive a seamless and are very strong. Additional strength is provided by ribs and product shape. On tanks it's possible to install fittings of different diameter to connect production equipment, piping, and plumbing fixtures.

### **Scope of application.**

Ukrhimplast® Tanks are widely used as in both industrial and household purposes. Tanks are reusable to storage of liquid, bulk chemicals, foods and drinking water.





**V100/V250/V320**

- ✓ Tanks for household use.
- ✓ Due to the special recesses they are convenient to be carried by hand.



**V300-V10000**

- ✓ Neck of large diameter allows to conveniently wash tank.

Tank type	Volume, l.	Dimensions $\varnothing/h$ (mm)	Weight, kg
V - 100	100	$\varnothing 480/700$	4
V - 250	250	$\varnothing 600/1150$	8
V - 320	320	$\varnothing 600/1425$	10

Tank type	Volume, l.	Dimensions $\varnothing/h$ (mm)	Weight, kg
V - 300	300	$\varnothing 710/860$	10
V - 350	350	$\varnothing 740/900$	10
V - 500	500	$\varnothing 830/1075$	16,5
V - 505	505	$\varnothing 740/1500$	16,5
V - 990	990	$\varnothing 740/2560$	28
V - 1000	1000	$\varnothing 1030/1400$	28
V - 2000	2000	$\varnothing 1230/2000$	50
V - 3000	3000	$\varnothing 1650/1600$	80
V - 5000	5000	$\varnothing 1850/2100$	110
V - 5001	5000	$\varnothing 2230/1550$	120
V - 8000	8000	$\varnothing 2230/2400$	160
V - 10000	10000	$\varnothing 2230/2850$	195





www.ukrhimplast.com

+380 (44) 492-82-06

# HORIZONTAL TANKS



## G150-G5000

✓ In contrast to V-Series tanks low center of gravity of horizontal G-series tanks provides complete stability.

Tank type	Volume, l.	Dimensions l*w*h (mm)	Weight, kg
G - 150	150	750*530*590	6
G - 250	250	930*614*680	10
G - 350	350	781*768*919	11
G - 500	500	1100*830*830	18
G - 505	505	1350*725*820	18
G - 1000	1000	1500*1030*1030	30
G - 1500	1500	1500*1230*1230	40
G - 2000	2000	2130*1200*1250	60
G - 3000	2900	2470*1784*1082	90
G - 5000	5000	2500*1840*1850	140

## SHOWER TANKS

This type of tanks is used for the organization of summer showers.



V=140 L.



V=200 L.

Black color provides water heating by the sun. The tapered bottom ensures 100% water emptying.

## PLANE TANKS



- ✓ Go through a standard doorway.
- ✓ Take up little space at the room.
- ✓ Easy to transport.
- ✓ The hole in the middle allows to conveniently attach tank, and stands also as a stiffening rib.



Tank type	Volume, l.	Dimensions l*w*h (mm)	Weight, kg
B - 1000	1000	1530*670*1400	34
B - 1500	1500	ожидається	
B - 2000	2000	1517*765*2350	77

## RECTANGULAR TANKS



This series is specially designed for easy storage and transportation of products. Special recess on the bottom of the tanks corresponds to the cover diameter and enables stable stacking of SG-tanks. When storing and sending a large number of tanks, storage and transport costs are significantly reduced.

Tank type	Volume, l.	Dimensions l*w*h (mm)	Weight, kg
SG - 100	100	800*480*400	5
SG - 200	200	1000*480*570	8
SG - 300	300	1230*600*585	12





www.ukrhimplast.com

+380 (44) 492-82-06

# TANKS FOR TRANSPORTATION

Tanks are intended for the transportation of non-hazardous liquids. They are equipped with an air valve caps. The increased weight of products, compared with conventional tanks, provides additional wall thickness (8-10 mm). Material of tanks has high strength and resistance to dynamic loads.



G-1000E - G-2000E



G-3000E

Tank type	Volume, l.	Dimensions l*w*h (mm)	Weight, kg
G-1000E	1000	1500*1030*1030	36
G-1500E	1500	1500*1230*1230	54
G-2000E	2000	2130*1200*1250	70
G-3000E	2900	2470*1784*1082	140
G-5000E*	5000	2500*1840*1850	205



G-5000E

\*In the G-5000E tank breakwaters are mounted.

When installed on a vehicle body, tank should be secured with straps and stops that prevent displacement of the vessel in motion should be ensured. Tanks for sprayers and machinery should be installed and assembled according to the technical documentation of the manufacturer of the equipment.







**GG3000**



**GG2000**

Septic tank – the construction for cleaning small amounts of wastewater of private houses. The wall thickness of such tanks – 8 mm, which allows to dig them

into the ground to a depth of 2 m. Tanks can be connected to the system of tanks. The system can be designed for service as a home and a few private houses.

**Advantages:**

- ✓ after cleaning the waste water is suitable for watering
- ✓ no contact of untreated sewage and soil
- ✓ no unpleasant odor

Model	Volume, l.	Dimensions (l * w * h), mm	Weight, kg
GG 1500	1500	1500*1230*1230	65
GG 2000	2000	2230*1280*1260	110
GG 3000	3000	2360*1500*1600	130

\*Septic tanks GG2000 and GG3000 are equipped with the basket for filter material.





www.ukrhimplast.com

+380 (44) 492-82-06

## MOBILE TOILET CABIN



### To provide sanitary facilities:

- ✓ on the construction
- ✓ at festivals
- ✓ on the championships
- ✓ at rallies
- ✓ at the gas station
- ✓ at summer camps
- ✓ at campsites



### Design features:

- ✓ wooden or plastic tray (bottom),
- ✓ storage tank with a capacity of 250 liters (provides more than 500 visits);
- ✓ white roof has good light transmission. During the day, natural light is enough, and in the evening and night it is sufficient to establish the cabin near the street lighting;
- ✓ ventilation system does not allow to linger unpleasant and harmful evaporations inside the cabin;
- ✓ dimensions (L \* W \* H) = 1200 \* 1200 \* 2400 mm.



## PEAT DRY CLOSET

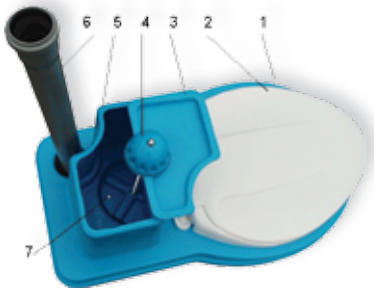


Peat dry closet is perfect for suburban areas and other places where there is no sewage system. It can be placed indoors or in toilet cabin.

- ✓ Effectively removes odors through evaporation of liquid only through the chimney.
- ✓ Recycles toilet waste into environmentally friendly compost, ready to fertilize the plants.
- ✓ Pure peat is used as filler.
- ✓ No chemically active liquids, hazardous to human health.

### Working principle:

The peat mixture absorbs liquid in the toilet. 1 kg of peat mixture absorbs 10 liters of liquid. There is no scents around the toilet, because all the evaporating liquid is discharged through a chimney.



### Components of peat dry closet

1. Enclosure
2. Toilet seat
3. Cover pan
4. Handle dispenser
5. Container
6. The exhaust pipe
7. Dispenser
8. Perforated container.



## TOILET CABIN

Country house toilet can be constructed from readily available materials, but you can do easier by buying a toilet cabin. This is qualitative thoughtful article in which contains all the amenities.

- ✓ Cabin dimensions: 1200 \* 1200 \* 2400 mm
- ✓ Cabin weight: 80 kg





www.ukrhimplast.com

+380 (44) 492-82-06



V=140 L.



V=200 L.

## SHOWER TANKS

### Scope of application:

- ✓ backyards of country houses
- ✓ summer camps for children
- ✓ city beaches
- ✓ building sites
- ✓ campsites, tourist parking
- ✓ warehouses

- ✓ black color ensures water heating in the sun
- ✓ cone-shaped bottom provides 100% water drain

With our tank, summer shower can be easily constructed from any material available.

## SHOWER CABIN

Shower cabin can be constructed from readily available materials, but you can do easier by buying a shower cabin. This is qualitative thoughtful article in which contains all the amenities. To improve the air

circulation vents are installed in the cabin walls. Cabine color – blue or green. Weight: 65 kg. Overall dimensions: 1200 \* 1200 \* 2470 mm.

### Cabin equipment:

1. Shower tank
2. Ball valve
3. Shower head
4. Plastic or wooden bottom
5. Door Handles
6. Snap lock
7. Clothes hook



# FLOATS FOR SLURRY PIPELINE



www.ukrhimplast.com

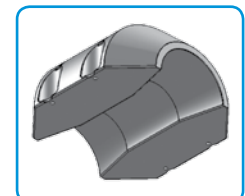
+380 (44) 492-82-06



Floating slurry pipeline is used to connect to the onshore dredge slurry pipeline. We produce plastic floats to keep the pipes of pipeline on the water. It is also possible to use our floats as floating bearing elements for any other purposes.

Advantages (compared with metal analogues):

- ✓ light weight
- ✓ reliable
- ✓ durable and inexpensive



It is possible to design and manufacture floats with other dimensions, as well as modify existing elements to suit different pipe diameters.

Float model	Length, mm	Diameter inner., mm	Diameter outer, mm	Weight, kg	Fasteners (2 sets per side)	Buoyancy, liters
Float 250	600	252	600	6	Bolt M10-70 Nut M10 Washer 10	57
Float 350	1100	354	1084	22	Bolt M20-100 Nut M20 Washer 20	350
Float 400	1100	404	1084	22	Bolt M20-100 Nut M20 Washer 20	340



www.ukrhimplast.com

+380 (44) 492-82-06

# ELEMENTS OF CHILDREN'S PLAYGROUND

## SANDBOX



## CONNECTING ELEMENT OF SANDBOX

Elements of the sandbox with the help of the tubes are connected in a closed loop. Free sites of pipes are buried in the ground.

Dimensions (L \* W \* H) = 1060 \* 60 \* 250 mm.



## SLIDE

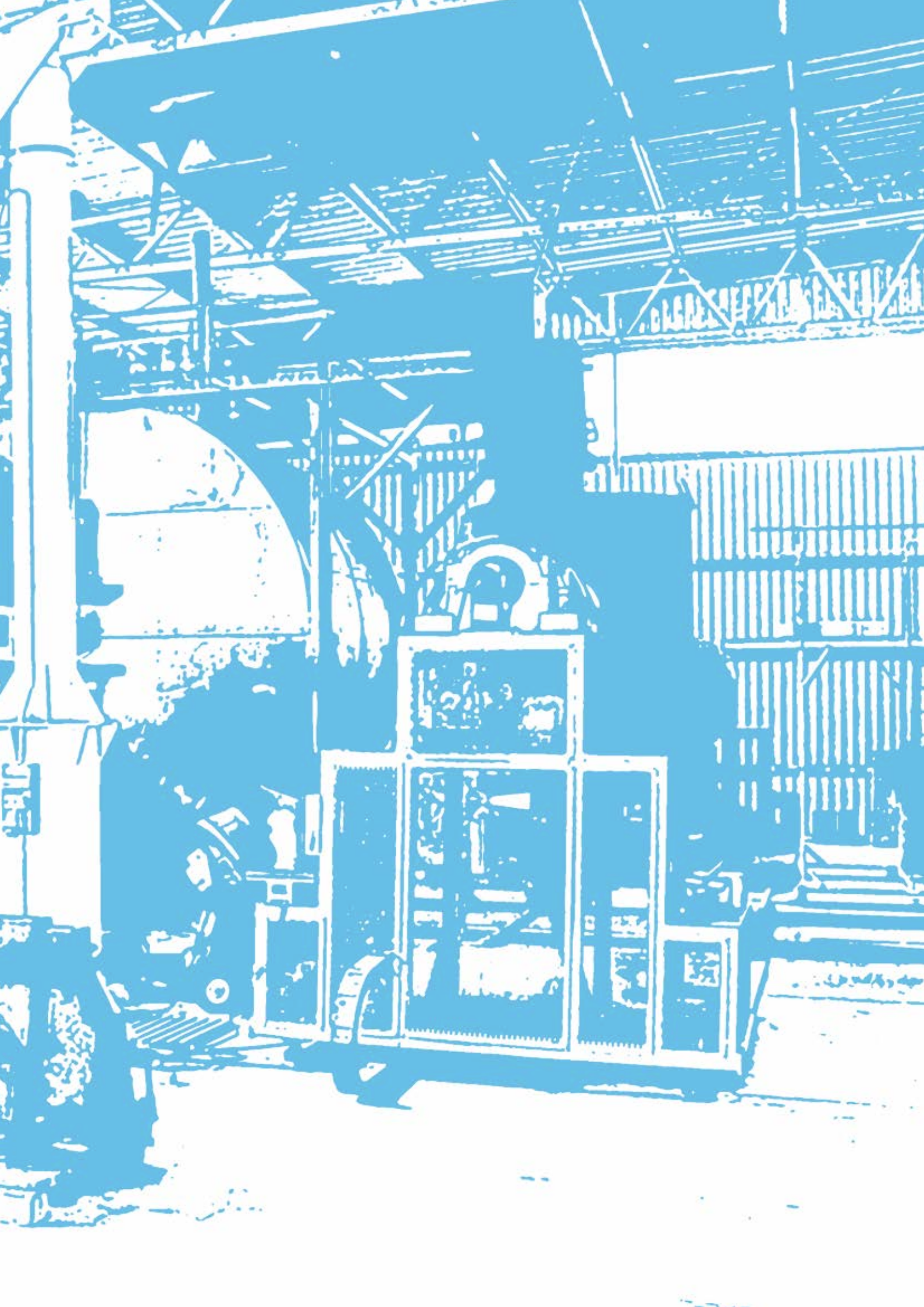
Length of slide: 2200 mm

Plastic slide has many advantages over metal analogues:

- ✓ more reliable (no rust)
- ✓ lighter
- ✓ warmer
- ✓ can be easily fixed in any place.

Overall dimensions (L \* W \* H) = 1900 \* 550 \* 1000 mm.





**Contacts:**

ООО «Химстройпластмасс», ООО «Укрхимпласт»  
(торговая марка УкрХимПласт)

**Stock:**

За, Radgospnaya str., Zazime vil.,  
Brovarsky district, Kiev region, 07415

**Office in Kiev, Ukraine:**

Phone / Fax: +380 44 492 82 06

Mob.: +380 67 240 03 45

e-mail: [sales@ukrhimplast.com](mailto:sales@ukrhimplast.com)

**[www.ukrhimplast.com](http://www.ukrhimplast.com)**

